

低加速電圧による そのまま観察

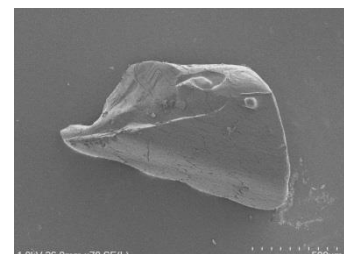
結晶の表面観察

塩化カリウム



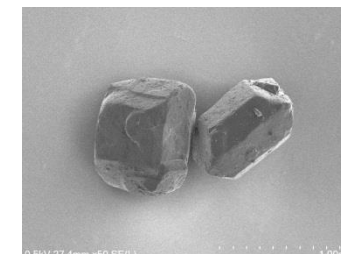
× 70

硫酸銅水和物

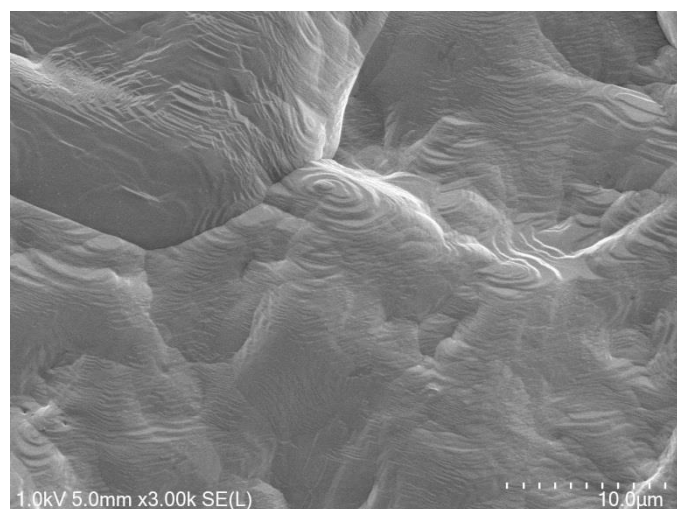


× 70

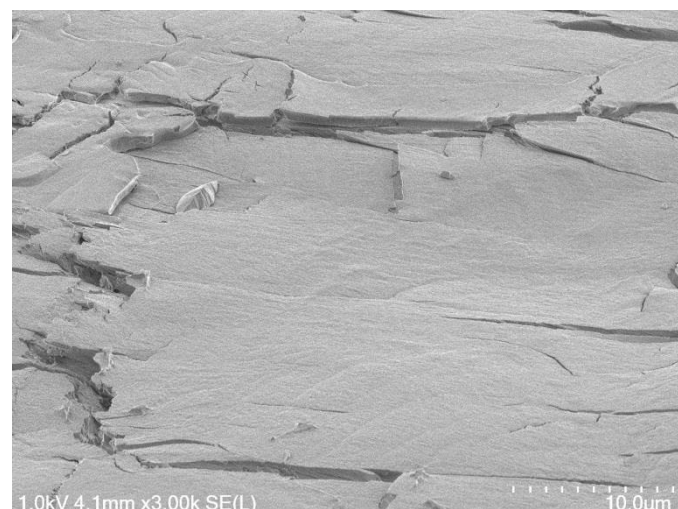
グラニュー糖



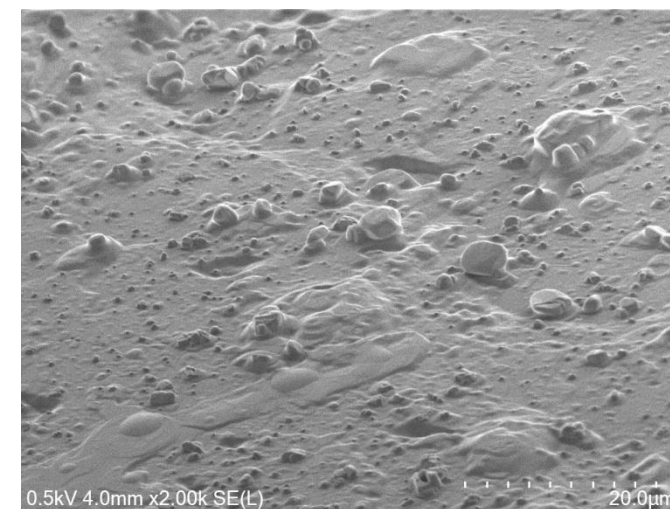
× 50



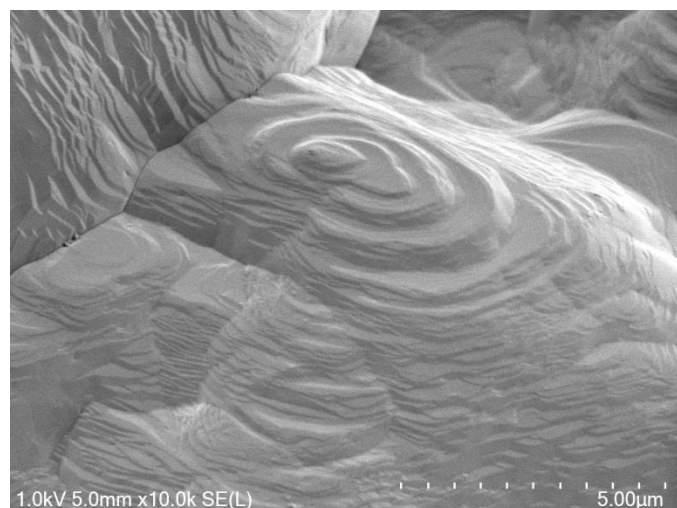
× 3,000



× 3,000

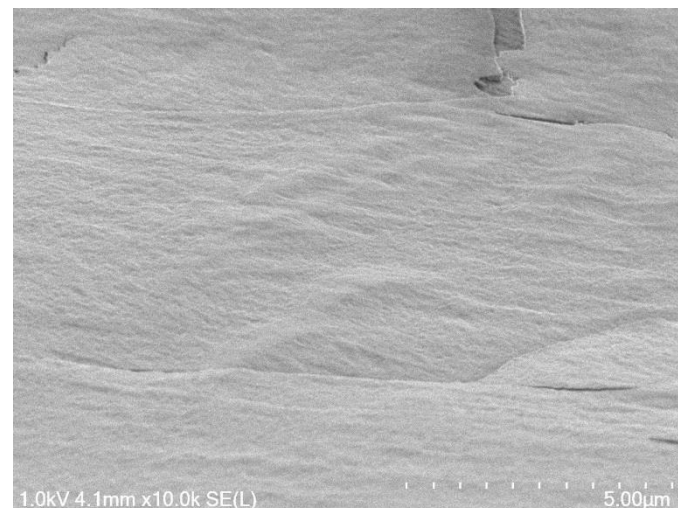


× 2,000



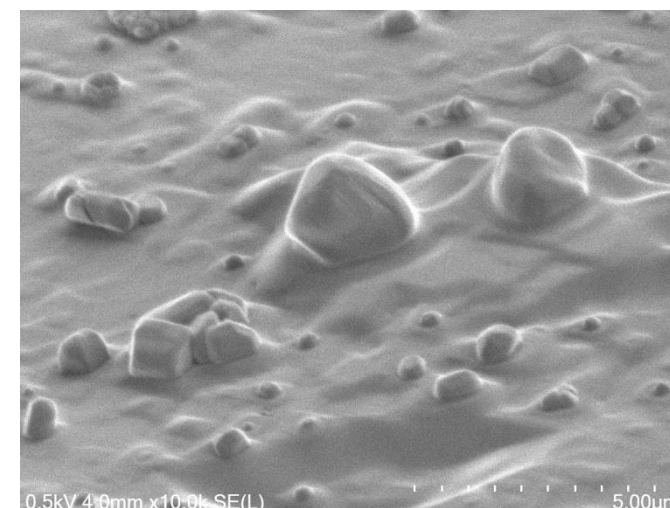
1kV

× 10,000



1kV

× 10,000



0.5kV

× 10,000

絶縁性材料をそのまま観察することで表面の微細形状が評価できます